

WINDOWS 8 Preview

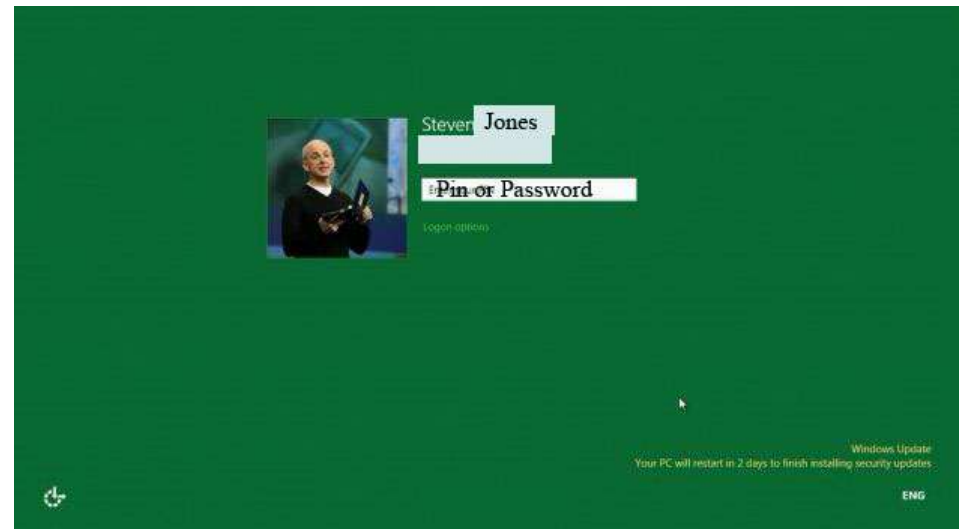
Introduction

WINDOWS 8 Tutorial

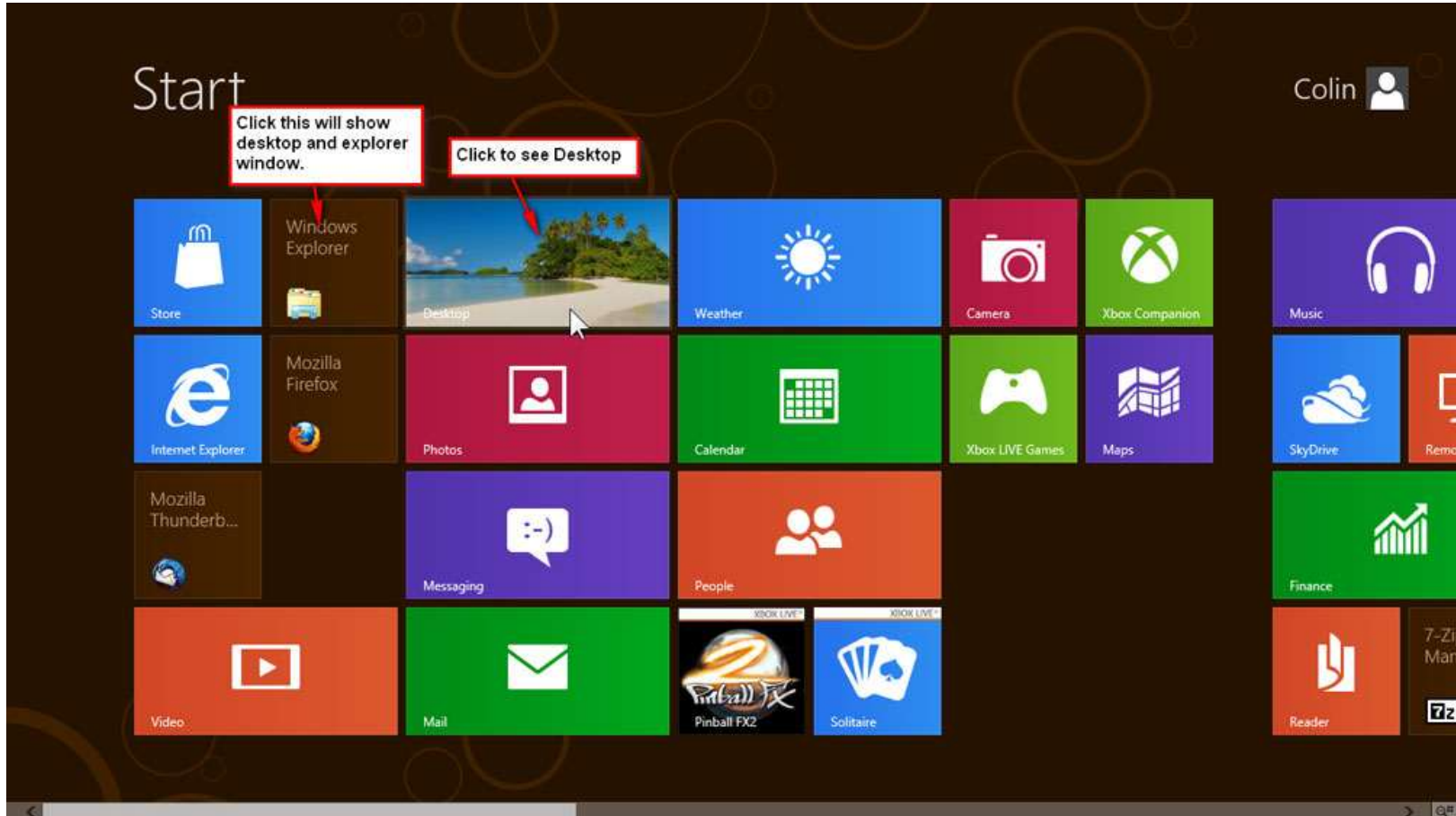


This is the Lock Screen also used to block Log on Screen

This is your Log on Screen
User Name
Password



WINDOWS 8 Tutorial



Opening Screen
It is Customisable
to suit your needs.

WINDOWS 8 Tutorial



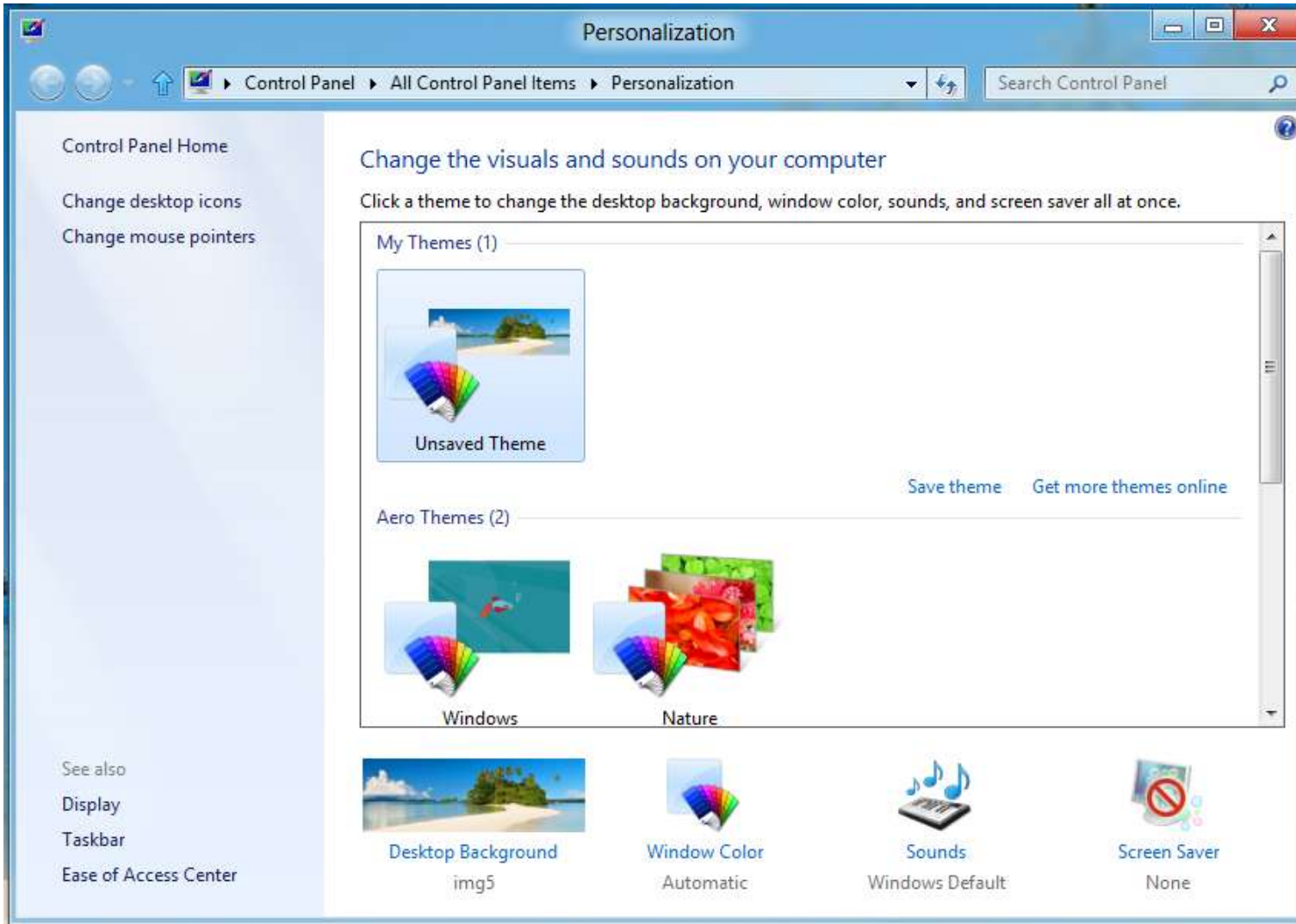
Clicking on Desktop Launches this screen. Right mouse click in bottom of screen give you an option of viewing your desktop if your screen is full.

WINDOWS 8 Tutorial



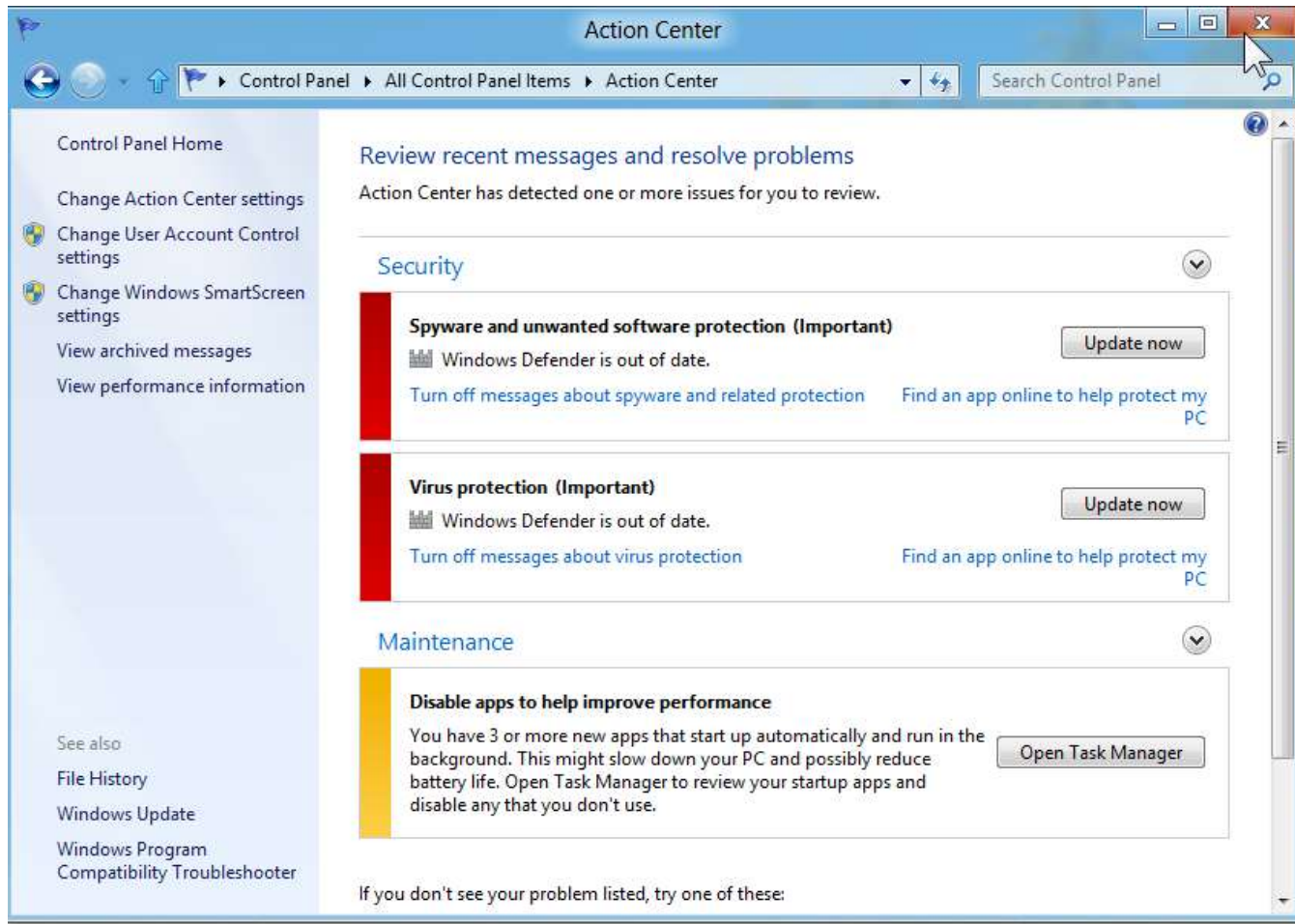
Right Mouse click gets you quickly to Personalize.

WINDOWS 8 Tutorial



Setting up
Themes
Desktop
Display
Mouse Pointers
Screen Savers

WINDOWS 8 Tutorial



Action Centre Anti-Virus and Firewall Status section

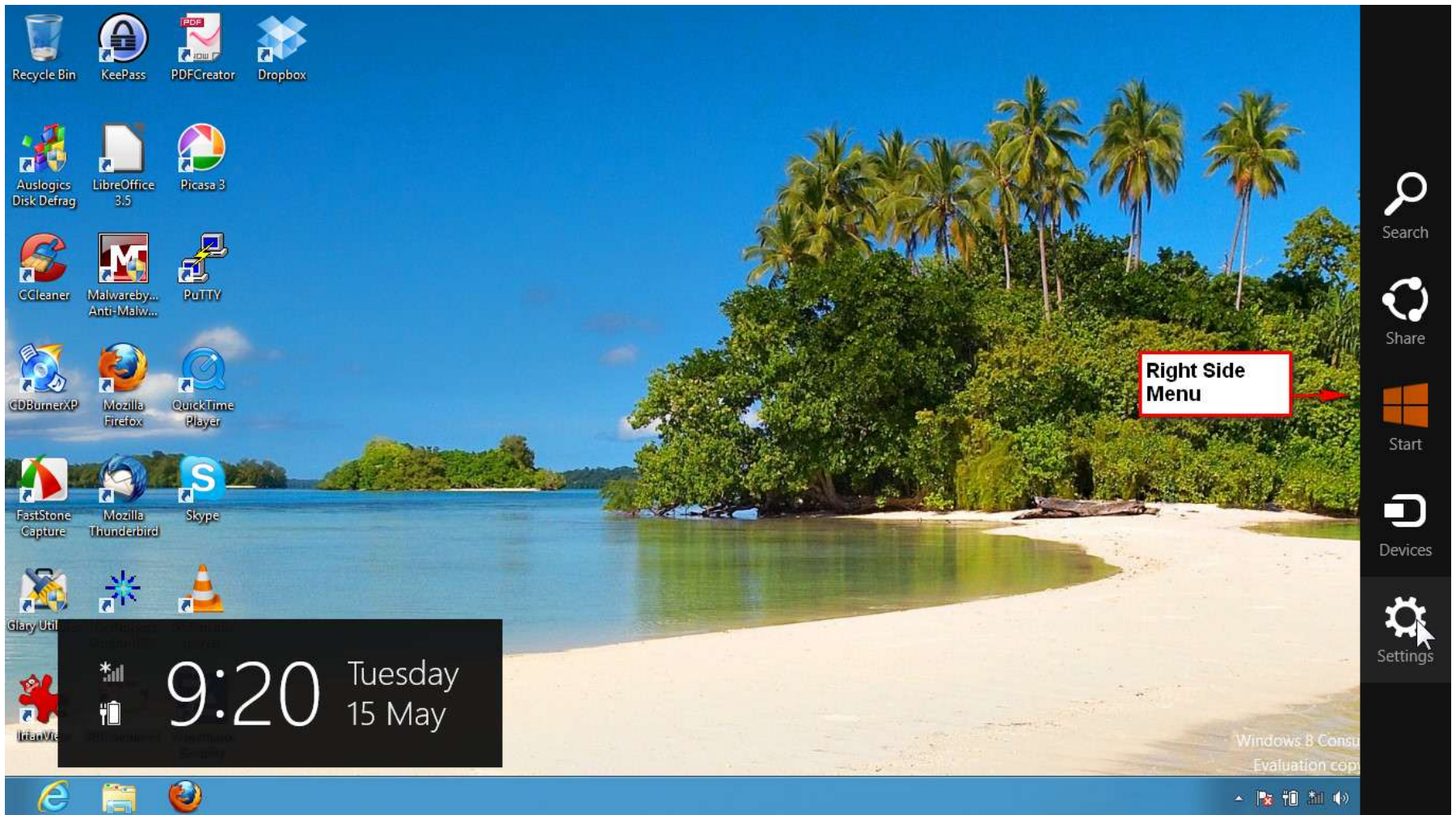
WINDOWS 8 Tutorial



Right Side Menu- This has done away with the Start Button or Orb.
Place mouse at either top or bottom on the right side of screen and the menu pops out.

WINDOWS 8 Tutorial

Putting mouse over the Menu gets this reaction. It changes colour sliding mouse over any icon gives you options



WINDOWS 8 Tutorial

Some handy power settings for your laptop. These can be used on most Operating systems from Windows XP.

The screenshot shows the Windows 8 System Settings window for Power Options. The window title is "System Settings" and the breadcrumb path is "All Control Panel Items > Power Options > System Settings". The main heading is "Define power buttons and turn on password protection". Below this, there is a sub-heading "Power and sleep buttons and lid settings" and a section for "Password protection on wakeup".

A red box highlights the power button settings, with the text "These settings make it work like an Apple Macintosh".

	On battery	Plugged in
When I press the power button:	Shut down	Shut down
When I press the sleep button:	Sleep	Sleep
When I close the lid:	Shut down	Shut down

Power and sleep buttons and lid settings

- When I press the power button: Shut down
- When I press the sleep button: Sleep
- When I close the lid: Shut down

Password protection on wakeup

- Require a password (recommended)
When your computer wakes from sleep, no one can access your data without entering the correct password to unlock the computer. [Create or change your user account password](#)
- Don't require a password
When your computer wakes from sleep, anyone can access your data because the computer isn't locked.

Buttons: Save changes, Cancel

WINDOWS 8 Tutorial

Desktop

Control Panel

Personalization

PC info

Help


Available


67


90


Notifications


Power

ENG
US

[More PC settings](#)

Clicking on the “Settings” icon gives you these options

WINDOWS 8 Tutorial

My usual Rant & Rave.

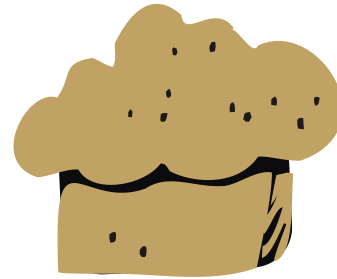
Don't forget you need to have an Anti-Virus, Anti-Malware and Firewall.

Keep it up to Date.

Windows 8 doesn't as yet have mass support.

I'm Using the Zone Alarm Internet Suite.
A very nice freebie or purchase the pro version.

The End



- Thank you
- Enjoy your Cupper